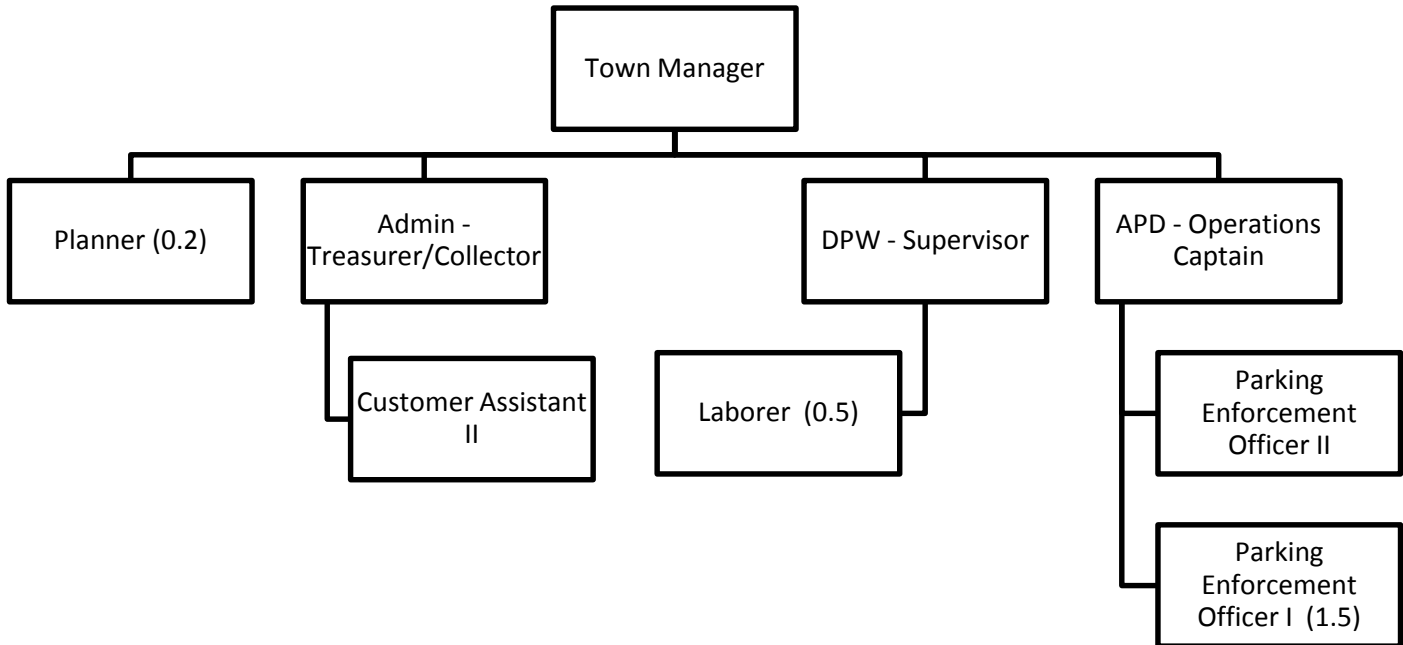


**TRANSPORTATION
FUND**

TRANSPORTATION FUND

MISSION STATEMENT: To provide a parking and public transportation system that meets the needs of Amherst residents and businesses, and, that can be supported through fees and other alternative non-tax revenue sources.



TRANSPORTATION FUND SUMMARY

	FY 11 Actual	FY 12 Actual	FY 13 Actual	FY 14 Manager	FY 15 Department	Change FY 14 - 15	Percent Change
Operating Revenues	\$ 943,217	898,662	964,404	1,003,434	962,795	(40,639)	-4.0%
Interest and Late Fees	\$ 2,708	929	515	1,000	1,000	0	0.0%
SUBTOTAL REVENUES	\$ 945,925	899,592	964,919	1,004,434	963,795	(40,639)	-4.0%
Transportation Fund Surplus	\$ 55,833	88,688	100,218	0	0	0	0.0%
TOTAL RESOURCES	\$ 1,001,758	988,280	1,065,137	1,004,434	963,795	(40,639)	-4.0%
Operating Budgets	\$ 707,320	686,606	819,625	808,474	785,787	(22,688)	-2.8%
Debt Service	\$ 71,032	67,763	65,975	59,125	57,625	(1,500)	-2.5%
Capital Program	\$ 75,000	80,000	35,000	40,000	20,000	(20,000)	-50.0%
TOTAL APPROPRIATION	\$ 853,352	834,369	920,600	907,599	863,412	(44,187)	-4.9%
Indirect Costs Appropriated in General Fund	\$ 93,782	92,643	96,835	96,835	100,383	3,548	3.7%
TOTAL EXPENDITURES	\$ 947,134	927,012	1,017,435	1,004,434	963,795	(40,639)	-4.0%

TRANSPORTATION FUND

REVENUES

GOAL STATEMENT: To maintain revenue sources adequate to support existing parking and transportation facilities and related expenses.

LONG RANGE OBJECTIVES:

FY 15 OBJECTIVES:

- To develop a fund balance policy for this fund.

SERVICE LEVELS:

	<u>FY09 Actual</u>	<u>FY10 Actual</u>	<u>FY11 Actual</u>	<u>FY12 Actual</u>	<u>FY13 Actual</u>
Funding Composition (%)					
Operating Revenues	90	92	94	91	91
Interest	1	1	1	0	0
Grants	0	0	0	0	0
Taxation	0	0	0	0	0
Surplus Funds	9	8	6	9	9

TRANSPORTATION FUND

REVENUES

		FY 11 Actual	FY 12 Actual	FY 13 Actual	FY 14 Manager	FY 15 Department	Change FY 14 - 15	Percent Change
Parking Violations	\$	306,248	246,560	265,303	300,000	265,000	(35,000)	-11.7%
Parking Fines	\$	159,585	134,868	144,785	155,000	145,000	(10,000)	-6.5%
Parking Fines - Registry Fees	\$	57,059	49,040	54,991	42,000	52,000	10,000	23.8%
Parking Meter Fees	\$	387,865	424,899	445,985	461,384	446,000	(15,384)	-3.3%
Parking Permit Fees	\$	14,925	24,955	20,783	15,000	20,745	5,745	38.3%
Parking Garage Reserved Fee	\$	17,535	14,550	23,081	22,050	24,850	2,800	12.7%
Parking Miscellaneous	\$	0	3,791	9,475	8,000	9,200	1,200	15.0%
Parking Interest and Late Fees	\$	2,708	929	515	1,000	1,000	0	0.0%
	\$	<u>945,925</u>	<u>899,592</u>	<u>964,919</u>	<u>1,004,434</u>	<u>963,795</u>	<u>(40,639)</u>	<u>-4.0%</u>

Rate Summary	Location	Current
Metered Parking	On Street, Main St and Spring St lots Boltwood Garage and CVS Lot	\$0.50 per hour \$0.50 per hour
Permit Parking	Residential Employment	\$25 per year \$25 per year
Leased	Lower level of Boltwood Garage	\$950/year

SIGNIFICANT BUDGET CHANGES:

Most parking fees will remain unchanged in FY15, except for the annual fee for reserved parking spaces in the lower level of Boltwood garage, which is recommended to increase to \$950 per year (from \$850). Revenue estimates have been adjusted to reflect actual revenue collections from recent years. No funds from Transportation Fund Surplus will be appropriated to support this budget. The July 1, 2013 Transportation Fund Free Cash is \$180,468, up from \$99,407 last year.

TRANSPORTATION FUND

4480: PARKING MANAGEMENT

GOAL STATEMENT: To develop and manage transportation systems to serve the Town Center and adjacent residential areas.

RECENT ACCOMPLISHMENTS & CURRENT CHALLENGES:

- Added six 15 minute free downtown parking spaces for easy, quick, high turnover parking.
- Added permit parking capacity on Spring Street and Gaylord Street, increasing very affordable and easily accessed parking for long term users.
- Re-negotiated lease to reopen Kellogg Ave Lot in reduced size after UUSA church expansion.
- Find support to provide increased route access to new location of Amherst Survival Center.
- Establish maintenance and replacement plan for metered on street parking.
- Improve lighting and signage at multi-space meters to enhance the public's ease of use.

LONG RANGE OBJECTIVES:

- To explore options for additional parking space inventory for peak demand periods and continue to evaluate options for annual revenue growth.
- To return outreach routes to PVTA management and financing.

FY 15 OBJECTIVES:

- To seek options to expand public parking through lease or other mutually beneficial arrangement, with owners of private downtown parking, as recommended in the 2008 Downtown Parking Study by PVPC.
- To offer input to the PVTA and UMass Transit from staff and the Public Transportation & Bicycling Committee to assist PVTA's comprehensive service analysis of bus routes serving Amherst for possible modification and enhancement of services in FY 15.

SERVICE LEVELS:

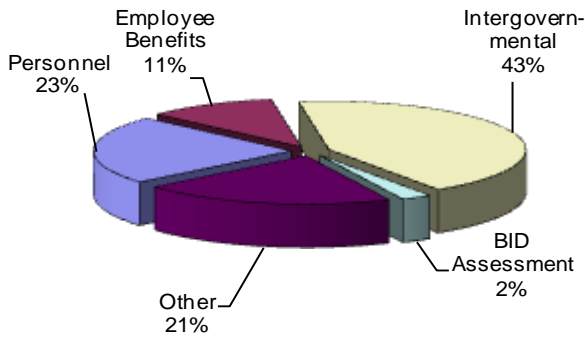
	FY09	FY10	FY11	FY12	FY13
	Actual	Actual	Actual	Actual	Actual
Street Meters Maintained	400	400	407	339	339
Handicapped Spaces	21	21	21	21	21
Pay and Display Meters Maintained	7	7	7	12	12
Stolen and Demolished Meters	5	10	8	6	4
Meter Repairs	60	52	55	70	68
Tickets issued	24,335	25,130	23,670	21,857	25,222
Traffic Enforcement/Special Events	15	18	19	22	20
Hours of Meter Enforcement	4,410	4,410	4,450	4,438	4,442
Boot and Tow Releases	65	83	53	57	46
Parking Permits Issued	750	601	600	700	639
Committees Served: Parking Task Force	1	1	1	1	1
Collection Rate of Total Issues	76%	74%	75%	73%	75.0%
Hearings/Appeals	1,318	1,515	1,318	1,248	1,211
Annual Meter Revenue per Space					
CVS Lot	\$479	\$426	\$451	\$433	\$533
Boltwood Garage	\$706	\$696	\$699	\$714	\$874
Street Meters	\$571	\$577	\$556	\$456	\$549
Amity Lot				\$619	\$1,092
Main St Lot				\$634	\$1,002
Spring St Lot				\$318	\$597

TRANSPORTATION FUND

4480: PARKING MANAGEMENT

	FY 11 Actual	FY 12 Actual	FY 13 Actual	FY 14 Manager	FY 15 Department	Change FY 14 - 15	Percent Change
Personnel Services	\$ 153,509	155,497	167,878	186,543	186,480	(63)	0.0%
Operating Expenses	\$ 553,811	531,109	639,245	617,931	595,307	(22,624)	-3.7%
Capital Outlay	\$	0	12,503	4,000	4,000	0	0.0%
TOTAL APPROPRIATION	\$ 707,320	686,606	819,625	808,474	785,787	(22,687)	-2.8%
SOURCES OF FUNDS							
User Fees	\$ 707,320	677,918	754,407	808,474	785,787	(22,687)	-2.8%
Surplus	\$ 0	8,688	65,218	0	0	0	0.0%
POSITIONS							
Full Time	3.62	3.70	3.70	3.70	3.70	0.00	
Part Time With Benefits	1.00	1.00	1.00	1.00	1.00	0.00	
Full Time Equivalents	4.12	4.20	4.20	4.20	4.20	0.00	

MAJOR COMPONENTS:



Personnel Services includes funds for two full time enforcement officers, a half time enforcement officer, a parking clerk, a .2 planner, and a half time maintenance worker shared with the Tree and Grounds Maintenance budget.

Employee benefits are \$86,391 for health insurance, retirement, and other employee benefits.

Intergovernmental, \$309,996 includes funds for the PVTA assessment, outreach routes, and taxes to the General Fund for parking facilities.

The Business Improvement District (BID) Assessment is \$30,000.

Other includes supplies, utilities, technical services, and subsidies.

SIGNIFICANT BUDGET CHANGES:

Operating costs declined because of a lower payment to PVTA. While the overall PVTA assessment will increase in FY 15, the Town's share decreases because of previously scheduled increased payments from UMass and the Five Colleges, Inc. toward the PVTA assessment. The payment to the BID is up \$5,000, per the Town's agreement with the BID.

The Outreach Routes costs for the revised Route are \$127,440, provided via contract with UMass Transit and funded entirely by the Town.

NOTE: Ridership trend data for all bus routes are included in the Appendix.

TRANSPORTATION FUND

GENERAL FUND SERVICES

GOAL STATEMENT: To compensate the General Fund for services provided by various departments.

LONG RANGE OBJECTIVES:

FY 15 OBJECTIVES:

- To evaluate charges for services from General Fund departments.

SERVICE LEVELS:

	<u>FY09</u> <u>Actual</u>	<u>FY10</u> <u>Actual</u>	<u>FY11</u> <u>Actual</u>	<u>FY12</u> <u>Actual</u>	<u>FY13</u> <u>Actual</u>
Number of departments reimbursed	7	7	6	6	6
Percentage of total Fund expenses paid to the General Fund	7	11	11	11	11

TRANSPORTATION FUND

GENERAL FUND SERVICES

	FY 11 Actual	FY 12 Actual	FY 13 Actual	FY 14 Manager	FY 15 Department	Change FY 14 - 15	Percent Change
General Fund Loan Repayment	0	0	0	0	0	0	0.0%
General Fund Services	\$ 93,782	92,643	96,835	96,835	100,383	3,548	3.7%
TOTAL APPROPRIATION	\$ 93,782	92,643	96,835	96,835	100,383	3,548	3.7%
SOURCES OF FUNDS							
User Fees	93,782	92,643	96,835	96,835	100,383	3,548	3.7%

MAJOR COMPONENTS:

The General Fund provides services which are used by the Transportation Fund. Transfers are made from the Transportation Fund to the General Fund to compensate for the cost of these services. Charges for FY 15 are as follows:

Select Board / Town Manager	2% of budget	\$ 5,662
Finance Department	1% of budget	14,592
Human Resources	1% of budget	2,943
Construction and Maintenance	5% of budget	47,075
Information Systems	3% of budget	21,452
Police		5,677
Town Hall Debt		<u>2,982</u>
TOTAL ADMINISTRATIVE REIMBURSEMENTS		<u>\$100,383</u>

SIGNIFICANT BUDGET CHANGES:

None.

TRANSPORTATION FUND

DEBT SERVICE

GOAL STATEMENT:

To provide funds to satisfy debt obligations.

LONG RANGE OBJECTIVES:

FY 15 OBJECTIVES:

- To make payments on debt incurred to build the parking garage on the Boltwood site.

SERVICE LEVELS:

	<u>FY09</u> <u>Actual</u>	<u>FY10</u> <u>Actual</u>	<u>FY11</u> <u>Actual</u>	<u>FY12</u> <u>Actual</u>	<u>FY13</u> <u>Actual</u>
Number of issues outstanding	1	1	1	1	1

TRANSPORTATION FUND

DEBT SERVICE

		FY 11 Actual	FY 12 Actual	FY 13 Actual	FY 14 Manager	FY 15 Department	Change FY 14 - 15	Percent Change
Principal	\$	55,000	55,000	55,000	50,000	50,000	0	0.0%
Interest	\$	16,032	12,763	10,975	9,125	7,625	(1,500)	-16.4%
TOTAL APPROPRIATION	\$	71,032	67,763	65,975	59,125	57,625	(1,500)	-2.5%
SOURCE OF FUNDS								
User Fees	\$	71,032	67,763	65,975	59,125	57,625	(1,500)	-2.5%
Surplus	\$	0	0	0	0	0	0	0.0%

MAJOR COMPONENTS:	<u>Principal</u>	<u>Interest</u>	<u>Total</u>
Parking Garage	50,000	7,625	57,625

SIGNIFICANT BUDGET CHANGES:

There are no significant changes to debt service in this fund. Fiscal 2020 is the last year of debt service on these bonds.

TRANSPORTATION FUND

CAPITAL PROGRAM

MISSION STATEMENT: To maintain facilities and equipment to ensure the delivery of efficient parking and transportation services.

RECENT ACCOMPLISHMENTS AND CURRENT CHALLENGES:

- Completed a significant upgrade to parking facility signs for meter instructions and way-finding in collaboration with the Chamber and the Amherst Business Improvement District.

LONG RANGE OBJECTIVES:

FY 15 OBJECTIVES:

- Replacement of aged or non-functional street meters.

SERVICE LEVELS:

	<u>FY09 Actual</u>	<u>FY10 Actual</u>	<u>FY11 Actual</u>	<u>FY12 Actual</u>	<u>FY13 Actual</u>
Number of Projects:					
Departmental Equipment (meters)	1	0	1	1	1
Existing Facilities	0	1	1	1	0
New Facilities	0	0	0	0	0

TRANSPORTATION FUND

CAPITAL PROGRAM

	FY 11 Actual	FY 12 Actual	FY 13 Actual	FY 14 Manager	FY 15 Department	Change FY 14 - 15	Percent Change
Departmental Equipment	\$ 50,000	70,000	0	0	0	0	0.0%
Existing Facilities	\$ 25,000	10,000	35,000	40,000	20,000	(20,000)	-50.0%
New Facilities	\$ 0	0	0	0	0	0	0.0%
TOTAL APPROPRIATION	\$ 75,000	80,000	35,000	40,000	20,000	(20,000)	-50.0%
SOURCE OF FUNDS							
User Fees	\$ 19,167	0	0	40,000	20,000	(20,000)	-50.0%
Surplus Funds	\$ 55,833	80,000	35,000	0	0	0	0.0%

MAJOR COMPONENTS:

Equipment

\$20,000

Repair and/or replace single post meters