

# AMHERST FIRE DEPARTMENT

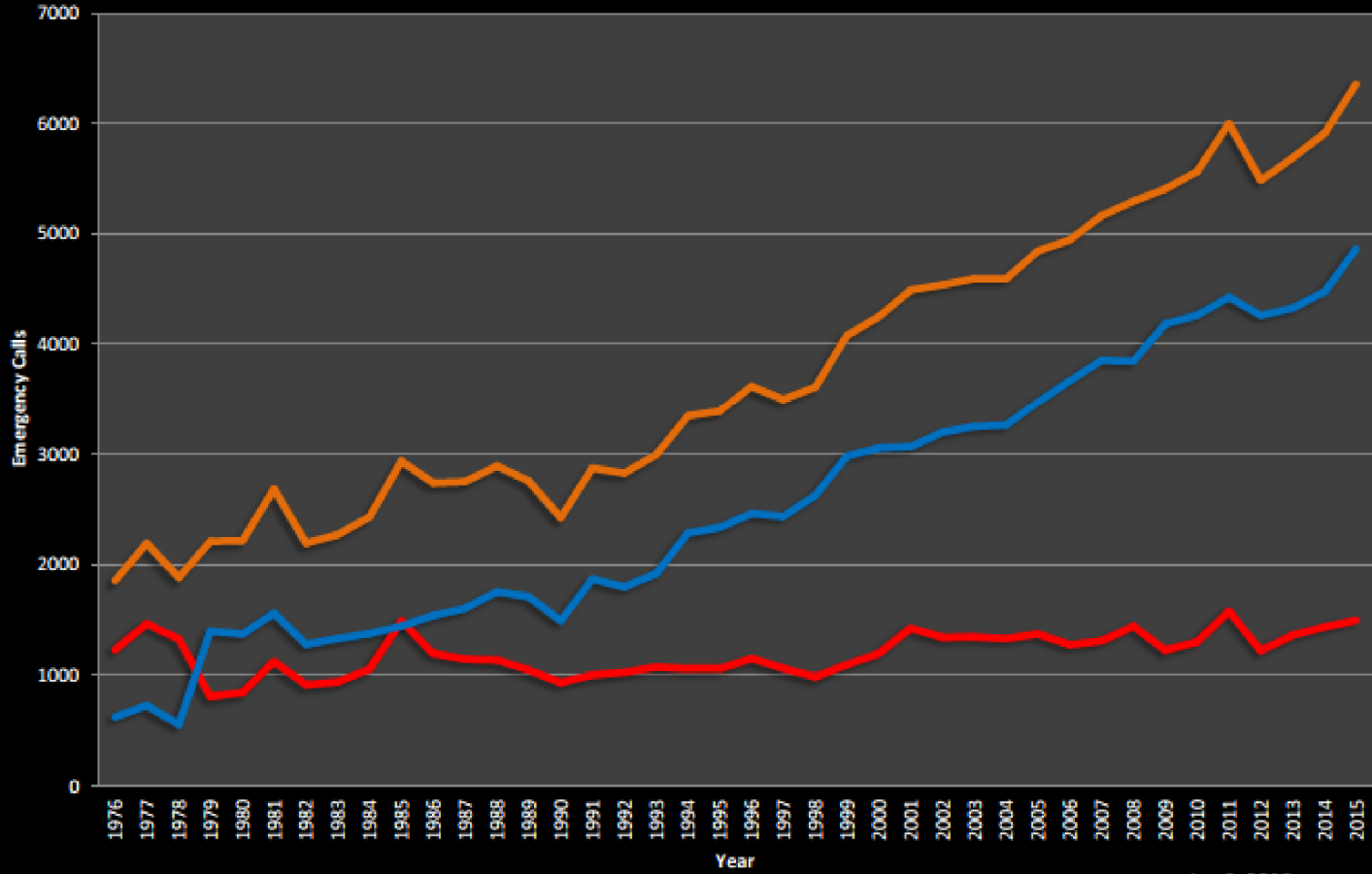


## Call volume & activity summaries & trends

Presented to the Finance Committee, February 2016

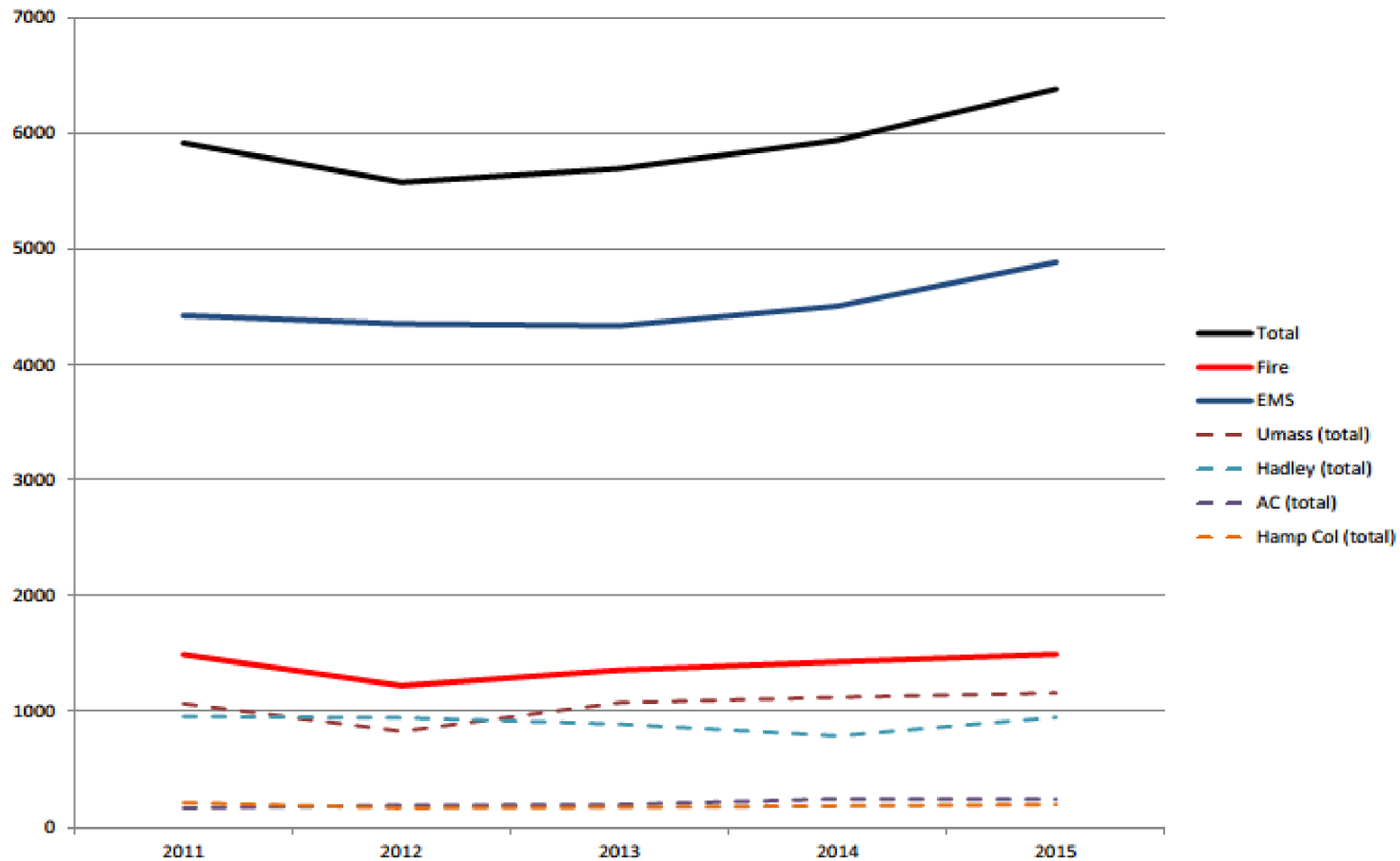
# Trend in Annual Call Volumes

— Total — Fire — EMS

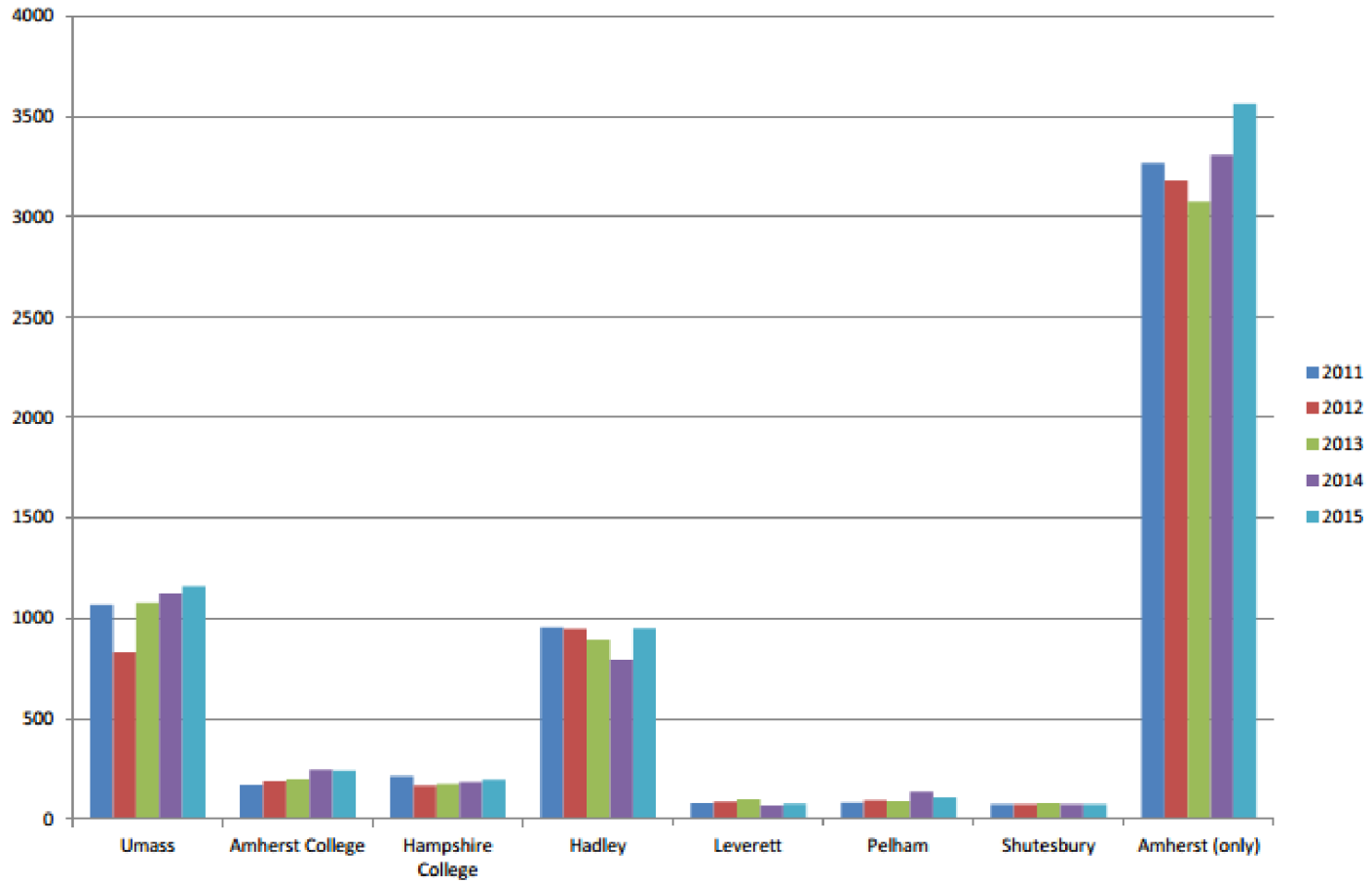


Jan 8, 2016

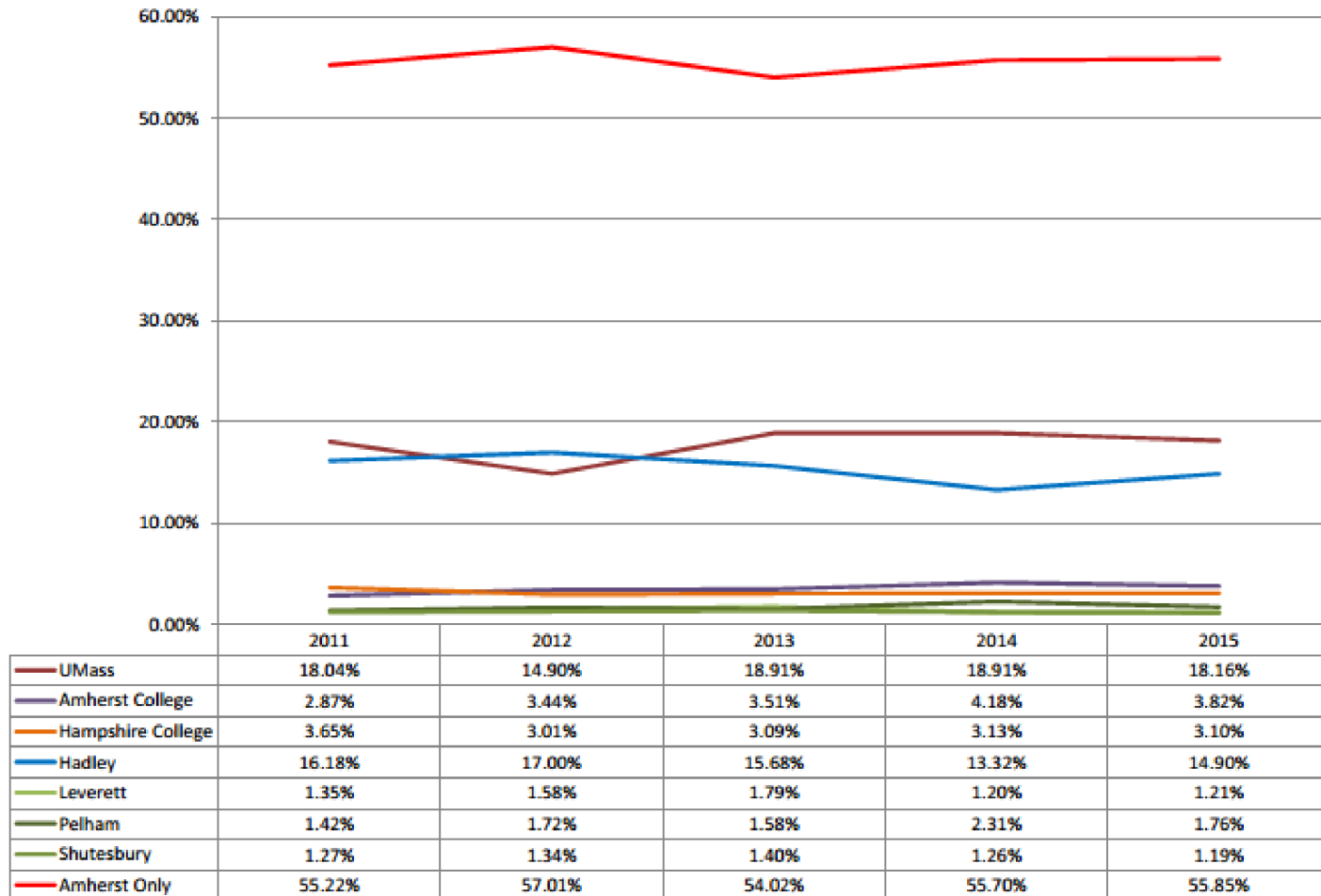
### 5 Year Trend in Call Volumes



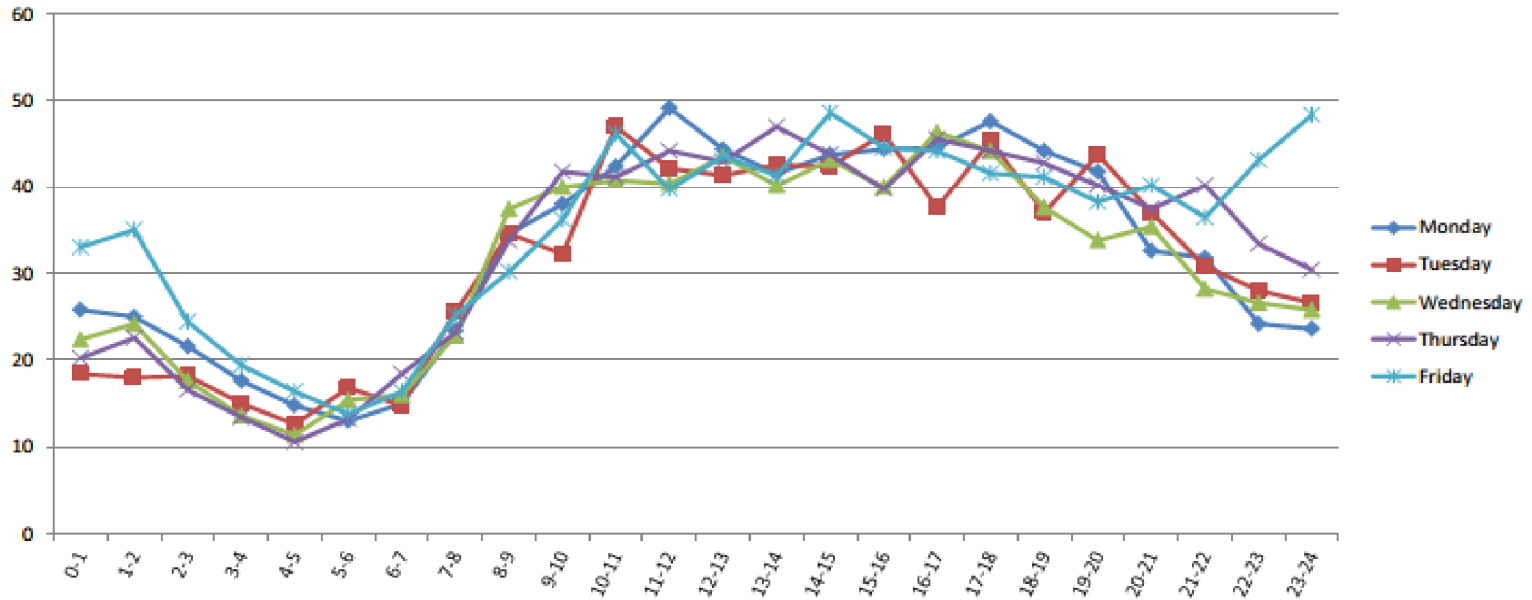
### 5 Year Call Volumes Separated by Location Total Fire & EMS Runs



### Each Jurisdiction As % of Total AFD Calls



	0-1	1-2	2-3	3-4	4-5	5-6	6-7	7-8	8-9	9-10	10-11	11-12	12-13	13-14	14-15	15-16	16-17	17-18	18-19	19-20	20-21	21-22	22-23	23-24
Mon	26	25	22	18	15	13	15	23	35	38	42	49	44	42	44	44	45	48	44	42	33	32	24	24
Tue	18	18	18	15	13	17	15	26	35	32	47	42	41	43	42	46	38	45	37	44	37	31	28	27
Wed	22	24	18	14	11	15	16	23	37	40	41	40	44	40	43	40	46	44	38	34	35	28	27	26
Thu	20	23	17	13	11	13	18	23	34	42	41	44	43	47	44	40	46	44	43	40	37	40	33	30
Fri	33	35	24	19	16	14	16	25	30	36	46	40	44	41	49	45	44	42	41	38	40	36	43	48



**SERVICE LEVELS:**

	FY 11 Actual	FY 12 Actual	FY 13 Actual	FY 14 Actual	FY 15 Actual	Avg Change
<b>Total Emergency Response:</b>	5,610	5,690	5,689	5,812	6,080	3.04%
<b>Fire Responses:</b>						
<b>Total Fire Calls:</b>	1,446	1,368	1,328	1,315	1,517	6.47%
Fires:	122	117	112	105	110	-2.45%
Rescue (includes MVCs):	187	186	165	196	281	13.44%
Other alarms:	239	242	273	527	275	12.11%
False/Accidental:	898	823	778	487	851	13.44%
Fire Losses:	\$2,446	\$454,104	\$784,285	\$1,171,635	\$307,555	
<b>Station Coverage Requests</b>						
Permanent Force:	216	214	150	168	165	
Call Force:	97	126	77	103	102	
Student Force	65	68	56	40	48	
Injuries Due to Fires:	0	0	1	1	0	
Fire Deaths:	0	0	1	0	0	
Firefighter Injuries:	0	3	1	0	2	
<b>Ambulance Responses:</b>						
<b>Total EMS Calls:</b>	4,164	4,322	4,361	4,497	4,563	2.18%
ALS (Advanced Life Support) Level:	3,033	3,083	3,084	2,011	3,421	
BLS (Basic Life Support) Level:	1,169	1,220	1,301	2,375	1,127	
Transfers:	3	1	1	5	0	
Patients Contacts:	4,202	4,303	4,385	4,386	4,548	1.92%
Patients Transported by AFD:	3,297	3,383	3,438	3,450	3,508	1.41%
<b>Mutual Aid Ambulance Requests:</b>	90	76	70	43	86	
<b>Fire Inspections/Prevention:</b>						
<b>Total Inspections:</b>	494	1,480	1,329	1,306		
Residential Smoke Detectors:	150	214	245	230		
Misc. Inspections:	249	1,014	821	781		
University/Colleges:	50	198	208	241		
Fire Education:	45	54	55	54		

**AMHERST FIRE DEPARTMENT**

Patients seen, grouped by calendar year, then by age group. "Unknown" patients include no transport calls.

	2007	2008	2009	2010	2011	2012	2013	2014	Total
<b>Unknown</b>	108	131	136	139	156	146	146	159	1121
<b>Birth - 17</b>	247	239	224	231	215	199	210	177	1742
<b>18 - 30</b>	1189	1265	1422	1509	1491	1428	1504	1570	11378
<b>31 - 45</b>	343	324	400	396	444	418	401	426	3152
<b>46 - 64</b>	713	649	706	679	778	758	744	810	5837
<b>Older than 65</b>	1344	1346	1331	1272	1431	1482	1405	1444	11055
<b>Total</b>	<b>3944</b>	<b>3954</b>	<b>4219</b>	<b>4226</b>	<b>4515</b>	<b>4431</b>	<b>4410</b>	<b>4586</b>	<b>34285</b>



## AMHERST FIRE DEPARTMENT

	2011			2012			2013			2014			2015			Five Year Total		
	Fire	EMS	Total	Fire	EMS	Total	Fire	EMS	Total	Fire	EMS	Total	Fire	EMS	Total	Fire	EMS	Total
Umass	264	803	1067	203	628	831	320	757	1077	317	806	1123	337	822	1159	1441	3816	5257
Amherst College	53	117	170	59	133	192	61	139	200	67	181	248	70	174	244	310	744	1054
Hampshire College	133	83	216	93	75	168	115	61	176	112	74	186	90	108	198	543	401	944
Hadley		957	957		948	948		893	893		791	791		951	951		4540	4540
Leverett		80	80		88	88		102	102		71	71		77	77		418	418
Pelham		84	84		96	96		90	90		137	137		112	112		519	519
Shutesbury		75	75		75	75		80	80		75	75		76	76		381	381
Amherst (only)	1041	2226	3267	868	2312	3180	862	2214	3076	935	2373	3308	997	2567	3564	4703	11692	16395
Total	1491	4425	5916	1223	4355	5578	1358	4336	5694	1431	4508	5939	1494	4887	6381	6997	22511	29508

	% change '11-'12			% change '12-'13			% change '13-'14			% change '14-'15		
	Fire	EMS	Overall	Fire	EMS	Overall	Fire	EMS	Overall	Fire	EMS	Overall
Umass	+23.11%	+21.79%	+22.12%	57.64%	20.54%	29.60%	+0.94%	6.47%	4.27%	6.31%	1.99%	3.21%
Amherst College	11.32%	13.68%	12.94%	3.39%	4.51%	4.17%	9.84%	30.22%	24.00%	4.48%	+3.87%	+1.61%
Hampshire College	+30.08%	+9.64%	+22.22%	23.66%	+18.67%	4.76%	+2.61%	21.31%	5.68%	+19.64%	45.95%	6.45%
Hadley		+0.94%	+0.94%		+5.80%	+5.80%		+11.42%	+11.42%		20.23%	20.23%
Leverett		10.00%	10.00%		15.91%	15.91%		+30.39%	+30.39%		8.45%	8.45%
Pelham		14.29%	14.29%		+6.25%	+6.25%		52.22%	52.22%		+18.25%	+18.25%
Shutesbury		0.00%	0.00%		6.67%	6.67%		-6.25%	-6.25%		1.33%	1.33%
Amherst (only)	+16.62%	3.86%	+2.66%	-0.69%	-4.24%	-3.27%	8.47%	7.18%	7.54%	6.63%	8.18%	7.74%
Overall	+17.97%	+1.58%	+5.71%	11.04%	+0.44%	2.08%	5.38%	3.97%	4.30%	4.40%	8.41%	7.44%

	As % of 2011			As % of 2012			As % of 2013			As % of 2014			As % of 2015			As % of 5 yr Total		
	Fire	EMS	Overall	Fire	EMS	Overall	Fire	EMS	Overall	Fire	EMS	Overall	Fire	EMS	Overall	Fire	EMS	Overall
Umass	17.71%	18.15%	18.04%	16.60%	14.42%	14.90%	23.56%	17.46%	18.91%	22.15%	17.88%	18.91%	22.56%	16.82%	18.16%	20.59%	16.95%	17.82%
Amherst College	3.55%	2.64%	2.87%	4.82%	3.05%	3.44%	4.49%	3.21%	3.51%	4.68%	4.02%	4.18%	4.69%	3.56%	3.82%	4.43%	3.31%	3.57%
Hampshire College	8.92%	1.88%	3.65%	7.60%	1.72%	3.01%	8.47%	1.41%	3.09%	7.83%	1.64%	3.13%	6.02%	2.21%	3.10%	7.76%	1.78%	3.20%
Hadley		21.63%	16.18%		21.77%	17.00%		20.60%	15.68%		17.55%	13.32%		19.46%	14.90%		20.17%	15.39%
Leverett		1.81%	1.35%		2.02%	1.58%		2.35%	1.79%		1.57%	1.20%		1.58%	1.21%		1.86%	1.42%
Pelham		1.90%	1.42%		2.20%	1.72%		2.08%	1.58%		3.04%	2.31%		2.29%	1.76%		2.31%	1.76%
Shutesbury		1.69%	1.27%		1.72%	1.34%		1.85%	1.40%		1.66%	1.26%		1.56%	1.19%		1.69%	1.29%
Amherst (only)	69.82%	50.31%	55.22%	70.97%	53.09%	57.01%	63.48%	51.06%	54.02%	65.34%	52.64%	55.70%	66.73%	52.53%	55.85%	67.21%	51.94%	55.56%

Mutual aid to other towns makes up less than 1% of calls and is included in "Amherst (only)" calls.

Updated: 2/4/2016