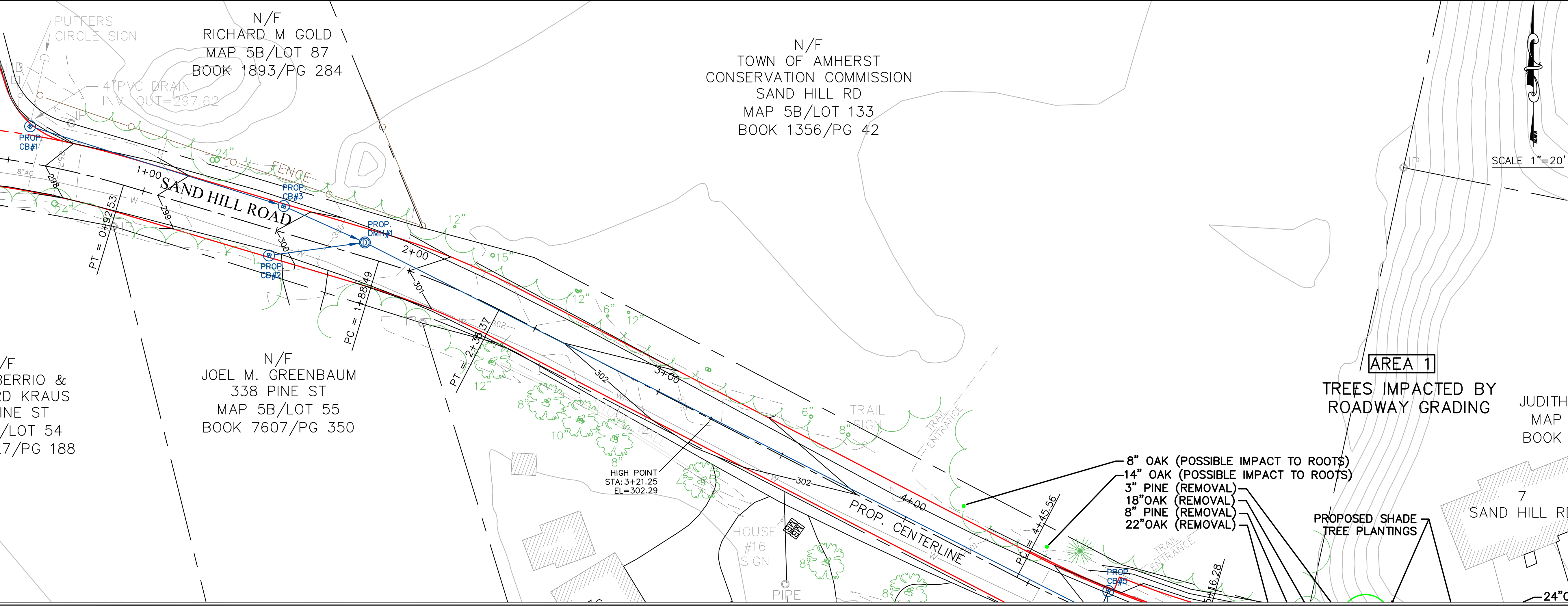
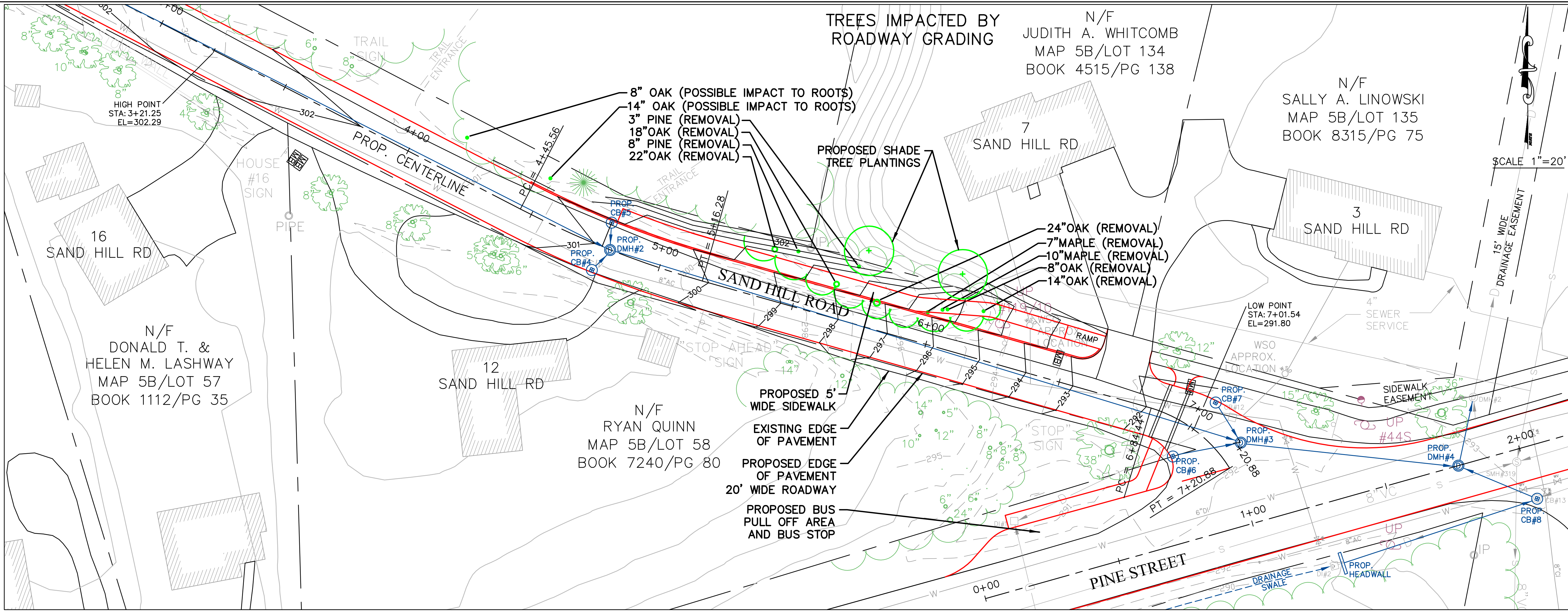


LEGEND

- EXISTING**
- CATCH BASIN
 - SEWER MANHOLE
 - DRAIN MANHOLE
 - HYDRANT
 - DRAIN PIPE
 - SEWER PIPE
 - WATER PIPE
 - EDGE OF PAVEMENT
 - EASEMENT LINE
 - CONTOUR LINE
 - IRON PIN
 - HIGHWAY BOUND
 - TREE
- PROPOSED**
- CATCH BASIN
 - DRAIN MANHOLE
 - DRAIN PIPE
 - CONTOUR LINE
 - EDGE OF PAVEMENT
 - CURB LINE
 - ROADWAY CENTER LINE
 - SHADE TREE
 - IMPACTED TREES



DATE	BY	DESCRIPTION	REV.
		PROPOSED ROADWAY IMPROVEMENTS SAND HILL ROAD (PINE STREET TO PUFFERS CIRCLE)AMHERST, MASSACHUSETTS 01002	
		PRELIMINARY ROADWAY & DRAINAGE LAYOUT	
		TOWN OF AMHERST DEPARTMENT OF PUBLIC WORKS ENGINEERING DIVISION 586 SOUTH PLEASANT STREET AMHERST, MA 01002 413-259-3050	
		JOB NAME: LOCATION: DESCRIPTION:	
		DRAWN BY: PGD CHECKED BY: - SCALE: 1"=20' DATE: JUNE, 2009 JOB NO.: TPOB-04 SHEET: 1 OF 1	

