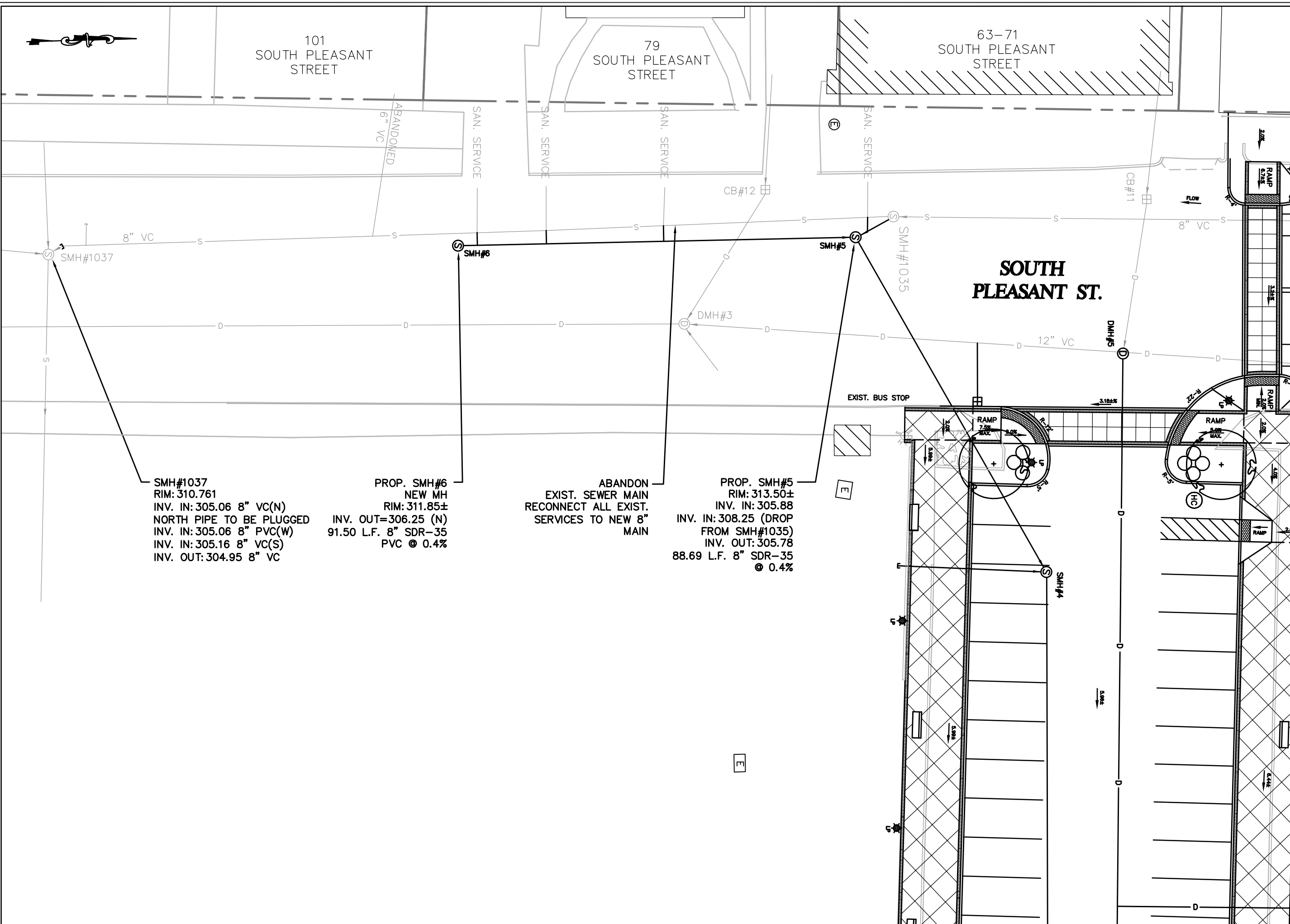




101  
SOUTH PLEASANT  
STREET

79  
SOUTH PLEASANT  
STREET

63-71  
SOUTH PLEASANT  
STREET



SMH#1037  
 RIM: 310.761  
 INV. IN: 305.06 8" VC(N)  
 NORTH PIPE TO BE PLUGGED  
 INV. IN: 305.06 8" PVC(W)  
 INV. IN: 305.16 8" VC(S)  
 INV. OUT: 304.95 8" VC

PROP. SMH#6  
 NEW MH  
 RIM: 311.85±  
 INV. OUT=306.25 (N)  
 91.50 L.F. 8" SDR-35  
 PVC @ 0.4%

ABANDON  
 EXIST. SEWER MAIN  
 RECONNECT ALL EXIST.  
 SERVICES TO NEW 8"  
 MAIN

PROP. SMH#5  
 RIM: 313.50±  
 INV. IN: 305.88  
 INV. IN: 308.25 (DROP  
 FROM SMH#1035)  
 INV. OUT: 305.78  
 88.69 L.F. 8" SDR-35  
 @ 0.4%

REV.	DESCRIPTION	DATE

DRAWN BY: PGD SCALE: 1" = 20' DATE: FEB 2, 2011 JOB NO.: TP07-03 SHEET: 2 OF 2	SOUTH PLEASANT STREET 366 SOUTH PLEASANT STREET AMHERST, MASSACHUSETTS 01002
TOWN OF AMHERST DEPARTMENT OF PUBLIC WORKS ENGINEERING DIVISION 366 SOUTH PLEASANT STREET AMHERST, MA 01002 413-259-3029	LAYOUT AND UTILITY PLAN

