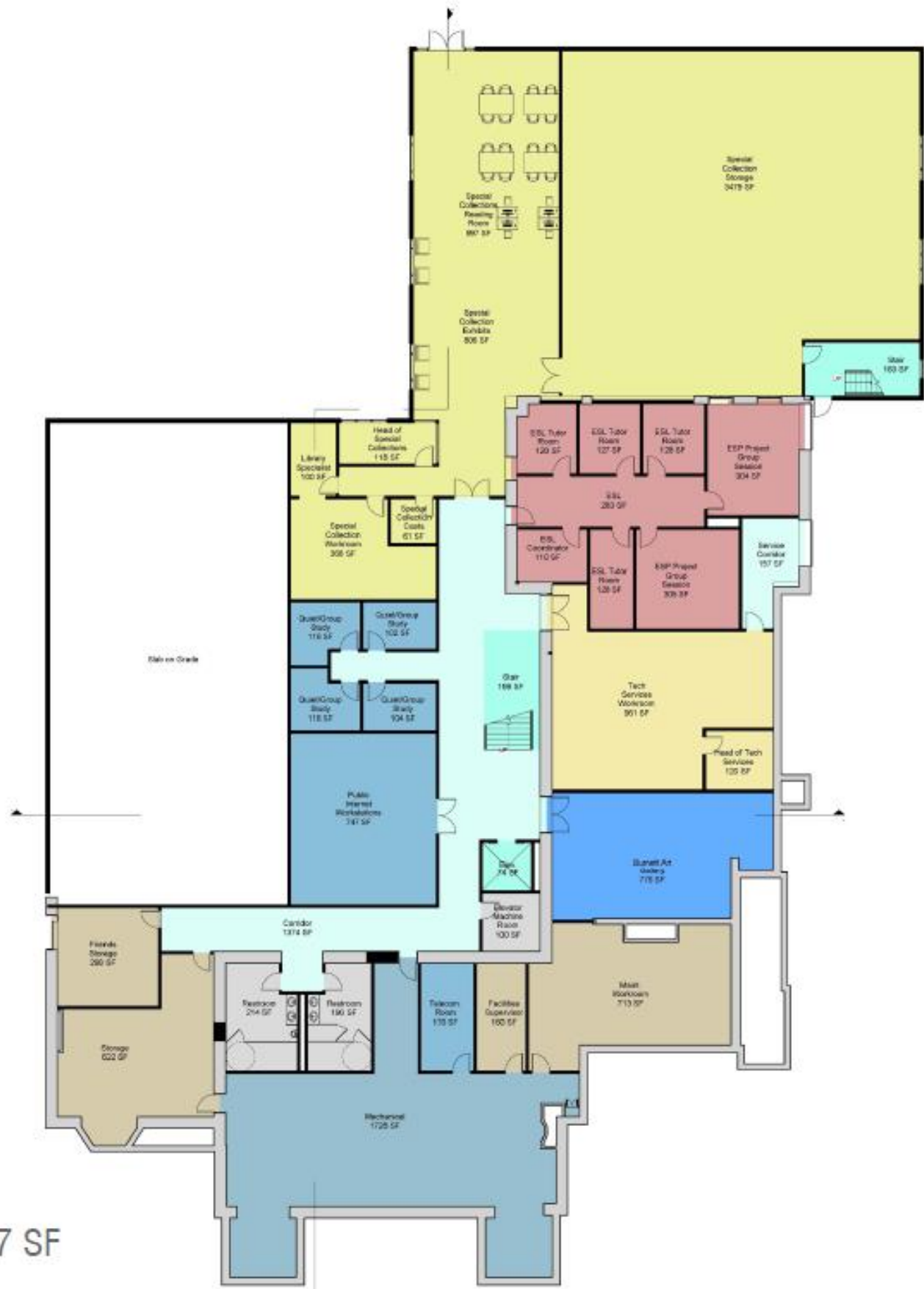




Existing  
 Gross: 16,543 SF

Ground Floor Plan

Proposed  
Gross: 18,767 SF



- Space Category Legend
- Administration
  - Adult Circulation
  - Adult Collection
  - Circulation
  - ESL
  - Facilities
  - General Space
  - Meeting Rooms
  - Research/Learning
  - Special Collections
  - Staff
  - Support
  - Vertical Circulation
  - Young Adult
  - Youth

# Ground Floor Plan